

# te paeroa RTL B

## SOUTH AND EAST CHRISTCHURCH

October Newsletter

Kia ora koutou, Mālō e lelei, Talofa lava, Taloha ni, Kia orana, Fakaalofa lahi atu, Namaste, Ni sa bula and warm Pacific greetings.

**RTL B Cluster Vision:** To ensure success for all ākonga through collaboration and inclusive education. *He waka eke noa*

**RTL B Cluster Mission:** We strengthen and empower kaiako to enhance educational outcomes.

**Values:** Whanaungatanga, Manaakitanga, Rangatiratanga & Kotahitanga

### **Strategic Goal 1:**

*We will **increase the bi-cultural competence of our team** to recognise and respond to cultural diversity by prioritising Māori identity, language and culture in our practice.*

### **Strategic Goal 2**

*We will **understand the wide-ranging impact that trauma can have** on the culture, development, wellbeing and educational success of young people.*

Term 3 brought the lovely spring weather, and finally a term break! We hope you have had a well deserved rest. Thank you for continuing to invite our team into your kura to support your kaiako and mokopuna. We are developing really strong partnerships with your team in order to tailor support. We continue to ensure we demonstrate our values, whanaungatanga, manaakitanga, rangatiratanga and kotahitanga as we support you and your team.

### **Overview:**

- Returning Team Member/Staffing
- RTL B Role Clarity
- Useful Resources
- Requests for Support
- National Satisfaction Survey 2023
- RTL B Professional Learning
- Reminders
- Compliments & Complaints

## New Team Member

We would like to welcome back the very experienced **Joyce McKinnel** who has returned on a part-time basis. We thank her for stepping in at short notice. We currently have a full team, no vacancies.

## RTLB Role Clarity-Book us in for 2024!

In these uncertain and constantly changing times, education is forever evolving, so too does our service. We have made changes over the last few years to keep up with current pedagogies and evidence informed practices. Our team is available to attend one of your staff only days in 2024 to introduce themselves and explain our role. This would only take 20 minutes. If you would like this opportunity, please contact your RTLB liaison.

## Highlighting Recent Released Resources

### 1. [Action Plan for Pacific Education \(Refresh\)](#)

*“A child will feel safe if they are wrapped in their culture”*

Tokelau, Hutt Valley, 2019

### 2. [Teacher Aide ERO Report:](#)

Website: [Supporting teacher aides to have the most impact | Education Review Office](#)

### 3. [Mental Health-Listening to Families](#)

Website [Listening to Families](#)

You Tube [Listening to Families - Answering Questions - YouTube](#)

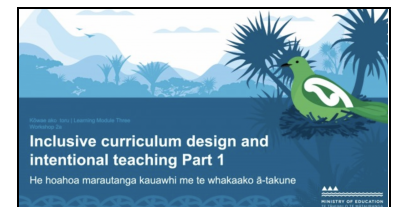
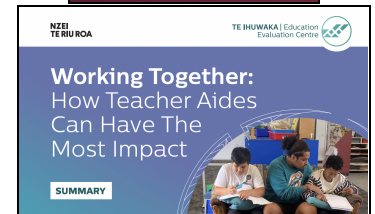
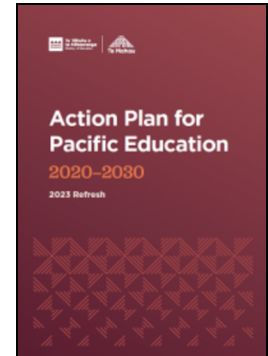
### 4. [Inclusive design modules - Planning for diversity](#) TKI website

## Requests for support-Kaiako driven - Reminder

From time to time, we come across kaiako who seem to not be fully aware of what the RTLB Service does or are confused about roles and responsibilities when teaming up with RTLB. It would be highly advantageous if SENCOs/LSCs could please ensure the kaiako are absolutely sure they understand how the RTLB Service will support them. Reassuring them it is a well supported, collaborative and highly reflective process, or a free personal coach in the classroom! We are all wanting to achieve the same goal, the very best outcomes for our mokopuna.

## National Satisfaction Survey 2023

Once a year, the MoE sends out a National Satisfaction Survey to all schools. Thank you to those of you who took the time to complete this. The MoE will send out the results to us by the



end of the year and we will share these with you.

## **RTLB Professional Learning & Development:**

### **Whole staff**

- Trauma Informed Practice
- Te Tiriti o Waitangi and our responsibilities to the 4 Articles
- Canterbury RTLB Conference: The 5 Clusters in Canterbury joined up for an incredible two days of learning. Our focus was *whakawhanaungatanga, maramatanga & hauora*.

Our speakers were: **Nadia Dick:** Wellbeing, **Janelle Riki-Waka:** Cultural Competencies, **Michelle Wilson:** Puketeraki Kāhui Ako Engagement Project and **Tracey Warau:** Whānau Engagement Action Plan.

### **Trauma Informed Practice**

#### [Stress, Trauma & The Brain \(Dr. Bruce Perry\)](#)

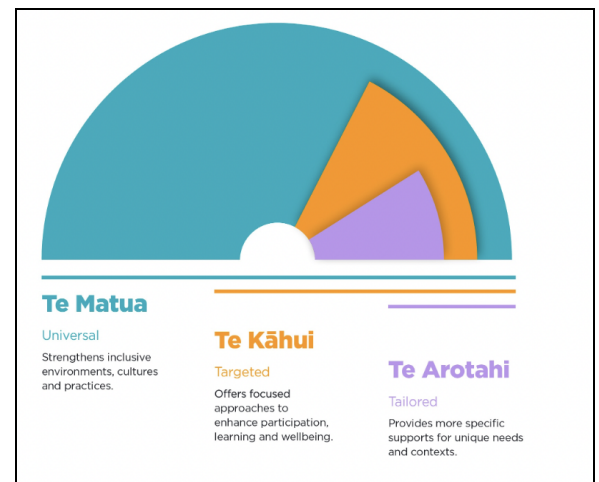
Our Trauma Informed Practice focus group has found these videos valuable to watch!



### **Reminders:**

We love these websites!

- [Mana Ake - leading lights pathway](#)
  - **username:** Stronger **password:** 4Tomorrow
- [Sparklers website](#) a reminder about this awesome resource. They are always updating with new activities!
- [RTLB Cluster 34](#)- Always a helpful place to check out our team! There are some helpful presentations from RTLB led PLD uploaded on the downloads tab.
- [Te Tūāpapa](#)-Flexible & Tailored Support



### **Compliments & Complaints**

A reminder, if you have any concerns (or compliments) about our RTLB working in your school, please do not discuss this with other RTLB in your school. This places them in a very uncomfortable position. Addressing any issues with the RTLB concerned would be the first step, and then, contacting me if you feel it is not resolved.

*Ngā mihi nui/Manuia te aso*

*Michelle Maule*

*Cluster Manager, Te Paeroa RTLB 34,*

[clustermanager@rtlb34.school.nz](mailto:clustermanager@rtlb34.school.nz)

*cellphone: 0272766713,*

[Te Paeroa website](#)